

An aerial photograph of a beach. The top half of the image shows clear, turquoise water with white foam from a wave breaking. The bottom half shows a wide, sandy beach with a light tan color. The transition between the water and the sand is a thin, white line of foam.

HARIO

SINCE 1921

HARIO has been dedicated to the design and production of quality heatproof glass since its founding in 1921. HARIO also currently operates the only heatproof glass factory in Japan.



New packaging for the V60 series

The V60 dripper is a favourite around the world. The new package is designed with the hope that more people will use V60 products. The symbolic design of "V60" evokes the image of refined craftsmanship and the freedom of brewing.



HARIO

Master Brand Coffee Items

Coffee Imagination

Master brand packaging for coffee items

HARIO offers a wide variety of items for you to enjoy coffee in many ways through different brewing methods. Our coffee items will have a fresh new look with the master brand package design.

"Coffee Imagination"

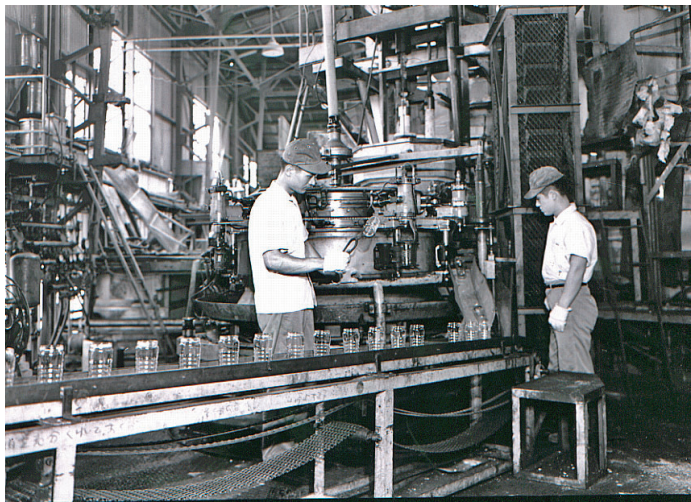
Our message is to deliver "the coffee experience" to you.



MORE ABOUT HARIO

玻璃王

HARIO (玻璃王) is Japanese for "king of glass". HARIO lives up to this name through its continued tradition of innovative, beautiful and high-quality heatproof glass.



HISTORY

Since 1921

HARIO began its history as a manufacturer of laboratory glassware. In 1948, the company expanded production to include household items, starting with the coffee syphon. HARIO also began producing lenses for automotive headlights in 1980. Today, HARIO continues to make a wide variety of products, from coffee- and tea-related products to microwave-safe kitchenware, and from aromatherapy to pet products.

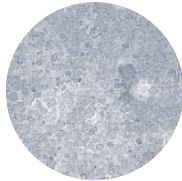


HEATPROOF GLASS

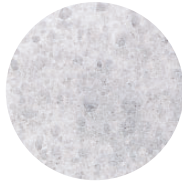
Components for Heatproof Glass Production



Silica sand

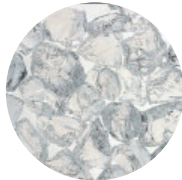


Borax



Boric acid

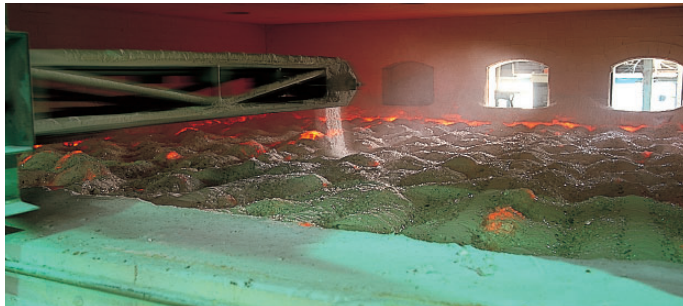
+



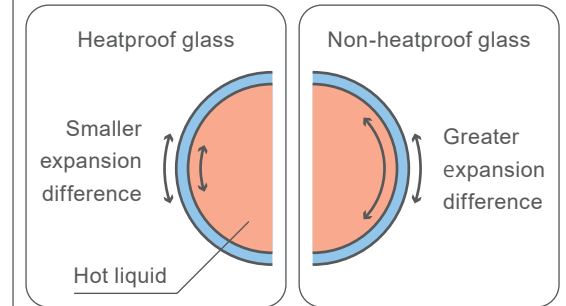
Cullet

Recycled glass
from the production
process

▼
All-electric melting furnace



<Diagram of a Heated Glass Cup >



Heat causes glass to expand. When a hot liquid is poured into a regular glass cup, the inner surface expands at a greater rate than the outer surface, causing it to break. The surfaces of heatproof glass expand and contract at similar rates regardless of which is closest to the heat source, preventing breakage.

Special Characteristics of HARIO's Heatproof Glass Products

1. Microwave-safe
2. Prevents the transfer of odour and colour
3. Dishwasher-safe

CLEAN INITIATIVES

A Factory Without Chimneys

In 1972, after much trial and error, HARIO became a glassmaking pioneer by successfully transitioning to a technique using all-electric melting furnaces. At that time, glass factories were known for air pollution with dust and smoke, but HARIO's breakthrough led to safer conditions for the surrounding environment as well as for the workers inside.



Safe and Eco-Friendly Heatproof Glass

HARIO glass is made with 100% natural minerals and is safe for daily use, as well as the environment. We add 100% natural salt to prevent bubbles from forming within the glass, making our products stronger and safer to use. Our glass is corrosion-resistant as well as heatproof, for fully microwave-safe products.

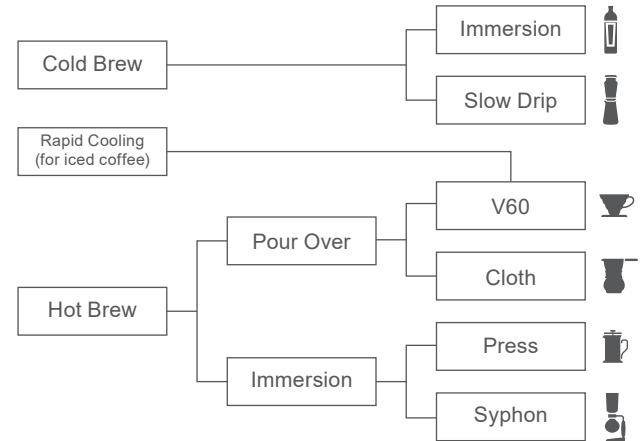


COFFEE



HARIO

HAND-BREWING EQUIPMENT



ACCESSORIES





HARIO outdoor



O-VOCB
 C/T4 018020
 O-VCB-B/O-VDM-02-HSV/
 VCF-02-40M/O-VCSM-50-HSV/
 O-VKB-70-HSV



O-VOCF
 C/T4 018037
 O-VCB-B/O-VDM-02-HSV/
 VCF-02-40M/O-VCSM-50-HSV/
 O-VKB-70-HSV/O-VMM-1-HSV/
 O-VSM-30-HSV*2



HARIO outdoor



O-VDM-02-HSV

C/T12 040014

W145 / D120 / H90

Opening diameter top: 120mm

Ground coffee: 48g

(Stainless steel)



O-VMM-1-HSV

C/T24 040021

W130 / D47 / H160

Opening diameter top: 47mm

Ground coffee: 17g

Washable grinder



O-VKB-70-HSV

C/T12 040038

W215 / D115 / H140

Opening diameter top: 71mm

Practical capacity: 500mL



new

O-VCF-02-W

C/T100 040090

W180 / D30 / H225



new

O-DCB-30

C/T288(12 × 24) 040083

W110 / H108

1 cup



O-VCSM-50-HSV

C/T24 040045

W170 / D126 / H120

Opening diameter top: 78

Practical capacity: 500mL



O-VSM-30-HSV

C/T24 040069

W116 / D87 / H85

Opening diameter top: 87

Practical capacity: 320mL



O-VCB-B

C/T18 018013

W330 · D290 · H170

Capacity: 14L





Zebrang



new

ZB-VDFP-02B
C/T36 4573533860732
W132 / D125 / H88
Opening diameter top: 125mm
1-4 cups



new

ZB-HCM-2B
C/T24 4573533860596
W150 / D53 / H190
Opening diameter top: 46mm
Ground coffee: 24g



new

ZB-SMCM-300B
C/T24 4573533860596
W120 / D93 / H107
Opening diameter top: 85mm
Practical capacity: 300mL



new

ZB-MDP-35B
C/T24 4573533860572
W177 / D78 / H128
Opening diameter top: 78mm
Practical capacity: 350mL



new

ZB-VCF-02-50W
C/T200 4573533860589
1-4 cups 50 sheets



new

ZB-CC-50B
C/T48 4573533860688
W72 / D72 / H62
Opening diameter top: 72mm
Ground coffee: 50g

SPECIAL FEATURES

- 1.Transform your hand grinder into an electric grinder with the Electro Solo.
- 2.The powerful motor can easily grind even light-roasted beans, allowing for fast and convenient grinding.
- 3.The compact design and rechargeable lithium battery make the Electro Solo portable and convenient.



EMS-1B
C/T12 708273
W36 / D36 / H180
This is an electric motor for use with hand grinders (models MSG-2 and MSS-1). This device cannot be used to grind coffee beans by itself.



EMSG-2B
C/T6 708136
W59 / D53 / H332
Ground coffee: 24g



STP-B-K / STP-EG-K
W110 / D200 / H75



MUGEN

V60 Single Pour Dripper MUGEN

HARIO is proud to present the MUGEN, a brand new coffee dripper. What sets the MUGEN dripper apart from regular V60 drippers is that it is designed for one single pour, with no blooming required. As opposed to the regular V60 Dripper's spiralled ribs, the MUGEN has star-shaped ribs, allowing the paper of the filter to stick closely to the sides of the dripper. This in turn allows for a slower flow of water, resulting in a longer time for the coffee and the water to be in contact.



VDMU-02-TB
C/T48 031302
W142 / D116 / H94
Opening diameter top: 116mm
1-2 cups
(Plastic)



VDMU-02-CW
C/T24 031326
W143/ D117/ H95
Opening diameter top: 117mm
1-2 cups
(Ceramics)



VDMU-2018-TB
C/T18 031357
W142/ D116/ H180
Dripper: 1-2 cups
Server: Practical capacity 300mL
Paper: 40 sheets

KASUYA SERIES

Designed by Tetsu Kasuya



The 2016 World Brewers Cup Champion, Tetsu Kasuya, has collaborated with HARIO to create a user-friendly mini-kettle, thoughtfully designed cupping tools, and a special dripper for his "4:6 method"- a brewing method based on the idea that anyone can make delicious coffee at home.



KDD-02-HSV
C/T48 729001
W120 / D100 / H100
Opening diameter top: 90mm
1-4 cups



KPK-600-HSV
C/T12 010697
W270 / D150 / H127
Opening diameter top: 70mm
Practical capacity: 600mL



KDK-300-MB
C/T24 010611
W165 / D90 / H100
Opening diameter top: 70mm
Practical capacity: 300mL



KDK-500-MB
C/T24 010666
W196 / D100 / H110
Opening diameter top: 80mm
Practical capacity: 500mL



KDC-02-B
C/T36 010628
W140 / D120 / H102
Opening diameter top:
116mm
1-4 cups



KCB-260-B
C/T36 010635
φ93 / H65
Opening diameter top:
93mm
Max. capacity: 260mL



KCS-1-MB
C/T48 010642
W166 / D44 / H26

World Barista Collaboration
with Pete Licata



Pete Licata

World Barista Championship Champion 2013
US Barista Championship Champion 2011
Nomad Coffee Group Consultant



PDC-02-W
C/T18 010086
W160/ D127 / H109
Opening diameter top: 116mm
1-4 cups
(Ceramics)



PDA-02-T
C/T36 010079
φ109/ H51
Opening diameter top: 87mm
1-4 cups



PDA-1524-T
C/T24 010062
W137/ D117/ H140
1-4 cups
Includes 40 sheets of VCF-02W



HARIO's Action for SDGs

BATON

Baton series is using 50 percent in material, coffee grounds and bamboo etc which discard after use. Also, this series is eco-friendly line up with filter paperless products. With wishing to pass the baton to the future, we do action from now on.



new

BT-CFOD-01
C/T24 171565
W111/ D110/ H87
1 cup



new

BT-CFOD-02
C/T24 171534
W121/ D135/ H105
1-4 cups



new

BT-OCM-01
C/T24 171572
W118/ D93/ H93
Opening diameter top: 80mm
Practical capacity: 170mL



Simply HARIO

Simply HARIO's elegance, simplicity and functionality will create a moment of tranquillity during a busy day.

HARIO's heat-resistant glass products are made from 100% natural minerals, with pure and minimalist shapes inspired by functionality, allowing you to experience calm, quiet moments to recharge yourself.

Relax and revitalize with the pure beauty of Simply HARIO.





S-VGBK-02-T
 C/T12 151376
 W146 / D120 / H195
 Practical capacity: 600mL
 1-4 cups
 Includes 40 sheets of
 VCF-02W



S-STP-600-W
 C/T12 151413
 W196 / D116 / H187
 Opening diameter top:
 101mm
 Practical capacity: 600mL



S-GCN-200-OV
 C/T24 151406
 φ102/ H138
 Opening diameter top:
 96mm
 Max. capacity: 800mL



S-GCM-40-W
 C/T24 151383
 W132 / D110 / H164
 Opening diameter top:
 100mm
 Practical capacity: 400mL



S-GTM-40-T
 C/T24 151390
 W124 / D82 / H158
 Opening diameter top:
 74mm
 Practical capacity: 400mL



new
S-GG-300
 C/T24 151468
 φ 80 / H130
 Opening diameter top:
 80mm
 Max. capacity: 300mL



new
S-GCBC-90-T
 C/T12 151444
 φ 94/ H304
 Opening diameter top:
 82mm
 Finished capacity: 800mL



new
S-CCG-2-W
 C/T12 151451
 W157/ D80 /H220
 Ground coffee: 30g



Crafts Science

The history of HARIO, Japan's only domestic heat-proof glass maker, began with its production of laboratory instruments.

Through repeated trial and error, HARIO achieved the accuracy, durability and Practicality demanded of rigorous laboratory experiments and earned the trust of researchers around the world.

In 2021, to mark the 100th anniversary of the company's founding, HARIO used its expertise in manufacturing laboratory equipment to create the new 'Crafts Science' drinkware collection.

This drinkware embodies the history of HARIO by combining their advanced processing technology, craftsmanship and functional scientific design.





CP-50
C/T24 164000
φ50 / H71
Opening diameter top:
38mm
Practical capacity: 50mL



CP-100
C/T24 164017
φ59 / H92
Opening diameter top:
44mm
Practical capacity: 100mL



BV-300
C/T24 151420
W125 / D89 / H105
Opening diameter top:
89mm
Practical capacity: 300mL



BV-600
C/T24 151437
W130 / D90 / H152
Opening diameter top:
90mm
Practical capacity: 600mL



BVD-3012-GR
C/T12 164758
W137 / D114 / H240
Practical capacity: 600mL
1-4 cups
Includes 40 sheets of
VCF-02W



CTP-500-GR
C/T24 164765
φ99 / H160
Opening diameter top: 66mm
Practical capacity: 500mL



BG-200
C/T24 164772
φ77 / H90
Opening diameter top: 77mm
Practical capacity: 200mL
Max. capacity: 260mL



BBM-500
C/T24 164789
W120/ D86 / H150
Opening diameter top: 86mm
Practical capacity: 500mL
Max. capacity: 620mL



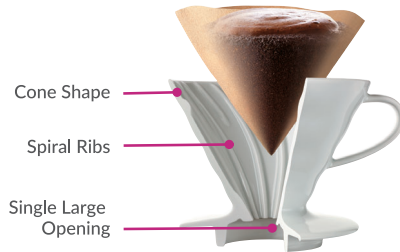
CSP-200
C/T24 164796
φ72 / H112
Opening diameter top:
52mm
Practical capacity: 200mL



DRIPPER & SERVER

V60

SPECIAL FEATURES



Cone Shape



The cone shape allows for better immersion, promoting maximum contact with water for optimal extraction.

Spiral Ribs



The spiral ribs allow for maximum coffee expansion.

Single Large Opening



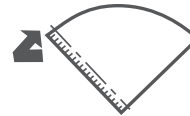
The larger opening allows water to flow easily, giving you greater control over your brewing time. This allows you to achieve different flavours.

TASTE

The V60 method results in milder coffee, and allows for a greater variety of recipes and flavours.

HOW TO USE

1



2

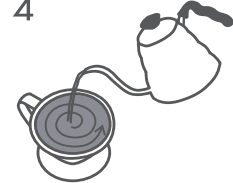


3



Wet the coffee and wait 30 seconds.

4



5



3 minutes

6





VDR-01-W
 C/T48 143326
 W115 / D100 / H82
 Opening diameter top:
 95mm
 Ground coffee: 24g
 (Plastic)



VDR-01-R
 143333



VDR-02-W
 C/T48 730472
 W137 / D116 / H102
 Opening diameter top: 116mm
 Ground coffee: 48g
 (Plastic)



VDR-02-R
 730496



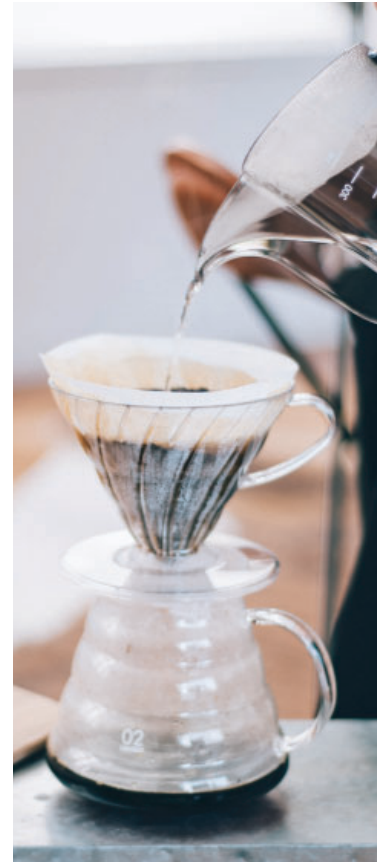
VDR-01-T
 C/T48 143319
 W115 / D100 / H82
 Opening diameter top:
 95mm
 Ground coffee: 24g
 (Plastic)



VDR-02-T
 C/T48 730465
 W137 / D116 / H102
 Opening diameter top:
 116mm
 Ground coffee: 48g



VDR-03-T
 C/T36 730502
 W157 / D137 / H122
 Opening diameter top:
 137mm
 Ground coffee: 72g





VDGR-01-W
C/T24 730106
W138 / D97 / H77
Opening diameter top:
97mm
Ground coffee: 24g
(Heatproof glass)



VDGR-01-B
730113



VDGR-02-W
C/T24 730120
W138 / D115 / H95
Opening diameter top:
115mm
Ground coffee: 48g
(Heatproof glass)



VDGR-02-B
730137



VDGN-03-B
C/T24 730151
W165 / D138 / H115
Opening diameter top:
136mm
Ground coffee: 72g
(Heatproof glass)



VDGR-01-OV
C/T24 736689
φ120 / H77
Opening diameter top:
97mm
Ground coffee: 24g
(Heatproof glass)



VDGR-02-OV
C/T24 736696
φ120 / H95
Opening diameter top:
115mm
Ground coffee 48g



VDMR-02-HSV
C/T12 736702
W145 / D120 / H90
Opening diameter top:
120mm
Ground coffee: 48g
(Stainless steel)



VDMR-02-MB
736719



VDPC-02CP
C/T12 W135 / D120 / H92
Opening diameter top: 120mm
Ground coffee: 48g
(Copper)



VDCR-01-W
C/T40 143340
W119 / D100 / H82
Opening diameter top:
95mm
Ground coffee: 24g
(Porcelain)



VDCR-01-R
736665



VDCR-02-W
C/T36 143364
W140 / D120 / H102
Opening diameter top:
116mm
Ground coffee: 48g
(Porcelain)



VDCR-02-R
736672



DT-1W
CT36 723962
φ115 / H42
Opening diameter top:
115mm
Practical capacity: 120mL
(Porcelain)



VPS-100W
CT24 723924
W165 / D68 / H100
For 100 sheets of
VCF paper filters
(Porcelain)



V60 Colour Drippers



VDC-02-PPR-EX
729827



VDC-02-PUH-EX
730908



VDC-02-SG-EX
731004



VDC-02-YEL-EX
731004



VDC-02-BU-EX
729735



VDC-02-TQ-EX
729858



VDC-02-IBU-EX
729766



VDC-02-GR-EX
729759



VDC-02-GR-EX
729780



VCS-01B
 C/T24 019119
 W162 / D114 / H110
 Opening diameter top:
 92mm
 Practical capacity: 450mL



VCS-02B
 C/T24 019126
 W180 / D125 / H133
 Opening diameter top:
 92mm
 Practical capacity: 700mL



VCS-03B
 C/T24 019133
 W185 / D137 / H157
 Opening diameter top:
 92mm
 Practical capacity:
 1,000mL



XVD-36B
 C/T24 019805
 W130 / D107 / H106
 Opening diameter top:
 85mm
 Practical capacity: 360mL



XVD-60B
 C/T24 019812
 W137 / D121 / H128
 Opening diameter top:
 85mm
 Practical capacity: 600mL



XVD-80B
 C/T24 019829
 W143 / D132 / H145
 Opening diameter top:
 85mm
 Practical capacity: 800mL



XGSR-36-TB
 C/T24 730625
 W130 / D107 / H99
 Opening diameter top:
 77mm
 Practical capacity: 360mL



XGSR-60-TB
 C/T24 730632
 W145 / D121 / H120
 Opening diameter top:
 77mm
 Practical capacity: 600mL



XGSR-80-TB
 C/T24 730649
 W150 / D129 / H138
 Opening diameter top:
 77mm
 Practical capacity: 800mL



VCWN-40-OV
 C/T24 019324
 W177 / D118 / H104
 Opening diameter top:
 88mm
 Practical capacity: 400mL



VCWN-60-OV
 C/T24 019331
 W182 / D128 / H121
 Opening diameter top:
 88mm
 Practical capacity: 600mL



Paper Filter

01 Size Paper Filters

1-2 cups



40 sheets

VCF-01-40W
C/T10X30 723214
Ground coffee: 24g



40 sheets

VCF-01-40M
C/T10X30 723245
Ground coffee: 24g



100 sheets

VCF-01-100WK
C/T5X20 728769
Ground coffee: 24g



100 sheets

VCF-01-100MK
C/T5X20 723801
Ground coffee: 24g



100 sheets

VCF-01-100W
C/T150 723313
Ground coffee: 24g



100 sheets

VCF-01-100M
C/T150 723344
Ground coffee: 24g

02 Size Paper Filters

1-4 cups



40 sheets

VCF-02-40W
C/T10X24 723221
Ground coffee: 48g



40 sheets

VCF-02-40M
C/T10X24 723252
Ground coffee: 48g



100 sheets

VCF-02-100WK
C/T5X16 728776
Ground coffee: 48g



100 sheets

VCF-02-100MK
C/T5X16 723818
Ground coffee: 48g



100 sheets

VCF-02-100W
C/T120 723320
Ground coffee: 48g



100 sheets

VCF-02-100M
C/T120 723351
Ground coffee: 48g

03 Size Paper Filters

1-6 cups



40 sheets

VCF-03-40W
C/T10X18 723238
Ground coffee: 72g



40 sheets

VCF-03-40M
C/T10X18 723269
Ground coffee: 72g



100 sheets

VCF-03-100W
C/T100 723337
Ground coffee: 72g



100 sheets

VCF-03-100M
C/T100 723368
Ground coffee: 72g

The box can be used as paper stand.










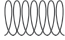

Kettle

KETTLES



SPECIAL FEATURES

- 1.Slim spout for an accurate and precise pour.
- 2.Easy-to-hold handle.
- 3.Compatible with various heat sources.
- 4.The electric kettle shuts off automatically after a set amount of time.

Supported Heat Sources			
Product	VKB/VKF/BDK/VKW	VKBN-90CP/ VKB-70HSV	EVKB/EVKT
Heat Source			
GAS 	●	●	×
ELECTRIC 	●	●	×
SHEATHED 	●	●	×
HALOGEN 	●	●	×
RADIANT 	●	●	×
INDUCTION 	●	×	×
PLUG 	×	×	●



VKB-70HSV
C/T12 021426
W255 / D115 / H140
Opening diameter top: 71mm
Practical capacity: 500mL



VKB-100HSV
C/T12 021136
W295 / D144 / H130
Opening diameter top: 77mm
Practical capacity: 600mL



VKB-120HSV
C/T12 021006
W274 / D144 / H147
Opening diameter top: 77mm
Practical capacity: 800mL



VKB-120-MB
C/T12 021563
W292 / D144 / H147
Opening diameter top: 77mm
Practical capacity: 800mL



VKF-120-HSV
C/T12 021570
W263 / D144 / H150
Opening diameter top: 77mm
Practical capacity: 800mL



VKF-120-MB
021587



VKW-120-HSV
C/T12 021716
W310 / D144 / H160
Opening diameter top: 77mm
Practical capacity: 800mL



VKBN-90CP
C/T6 021099
W290 / D126 / H145
Opening diameter top: 71mm
Practical capacity: 700mL



BDK-80-W
C/T6 021501
W280 / D136 / H170
Opening diameter top: 77mm
Practical capacity: 800mL



VKA-35-TB
C/T24 021754
W177 / D78 / H128
Opening diameter top: 78mm
Practical capacity: 350mL

HARIO

Master Brand Coffee Items

Coffee Imagination

IMMERSION DRIPPERS

SPECIAL FEATURES

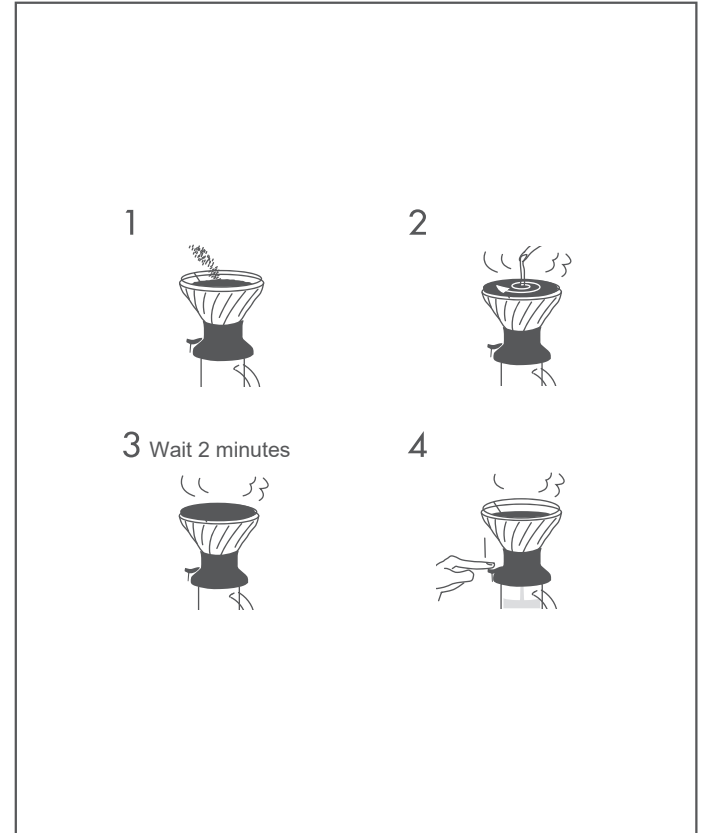
1. Hybrid method of immersion and pouring.
2. Allows anyone to extract coffee evenly.
3. Pour coffee with the press of a switch.

TASTE

Makes a clean and consistent brew without sediment.
Your favourite taste is easily reproduced with a standard recipe.



HOW TO USE





SSD-200-B
C/T12 728165
W118 / D115 / H133
Opening diameter top: 115mm
Finished capacity: 200mL
Includes 40 sheets of VCF-02W



SSD-5012-B
C/T12 728172
W130 / D115 / H215
Opening diameter top: 115mm
Finished capacity of dripper: 200mL
Practical capacity of server: 300mL
Includes 40 sheets of VCF-02W



SSD-360-B
C/T12 528789
W136 / D136 / H152
Opening diameter top: 136mm
Finished capacity: 360mL
Includes 40 sheets of VCF-03W



Customized color version can be ordered.



NEL DRIP POTS



SPECIAL FEATURES

- 1.You can achieve different flavours with different pour techniques.
- 2.Reusable cloth filter.
- 3.Traditional brewing method.

TASTE

The cloth filter allows for maximum expansion of your coffee during the bloom, resulting in a rich and smooth cup.



DPW-1
C/T12 331723
φ95 / H168
Opening diameter top: 93mm
Practical capacity: 240mL

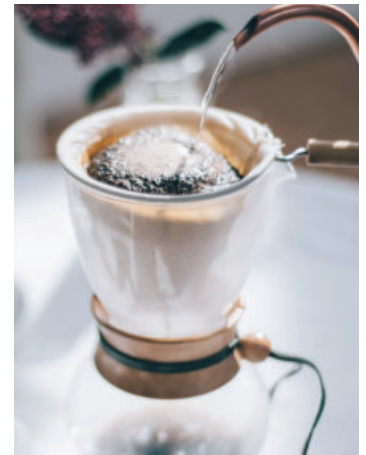


DPW-3
C/T12 331730
φ110 / H195
Opening diameter top: 101mm
Practical capacity: 480mL



FD-1
C/T100 916371
W136 / H103

FD-3
C/T100 916388
W148 / H110



STAINLESS STEEL DRIPPERS



SPECIAL FEATURES

- 1.The same basic brewing method as the V60.
- 2.Reusable filter — no paper filters needed.
- 3.Less sediment for a cleaner cup.

TASTE

Whereas paper filters filter out most of the coffee oils, the stainless steel filter allows the oils to seep through, resulting in a creamier mouthfeel.



DMD-01-HSV
C/T48 727960
W132 / D109 / H81
Opening diameter top:
94mm
Ground coffee: 24g



DMD-02-HSV
C/T48 727977
W148 / D123 / H96
Opening diameter top:
108mm
Ground coffee: 24g

FRENCH PRESSES

SPECIAL FEATURES

- 1.Can be used for both coffee and tea.
- 2.One of the simplest and most effortless ways of handbrewing a hot cup of coffee.
- 3.No additional equipment is needed to brew coffee of loose leaf tea.

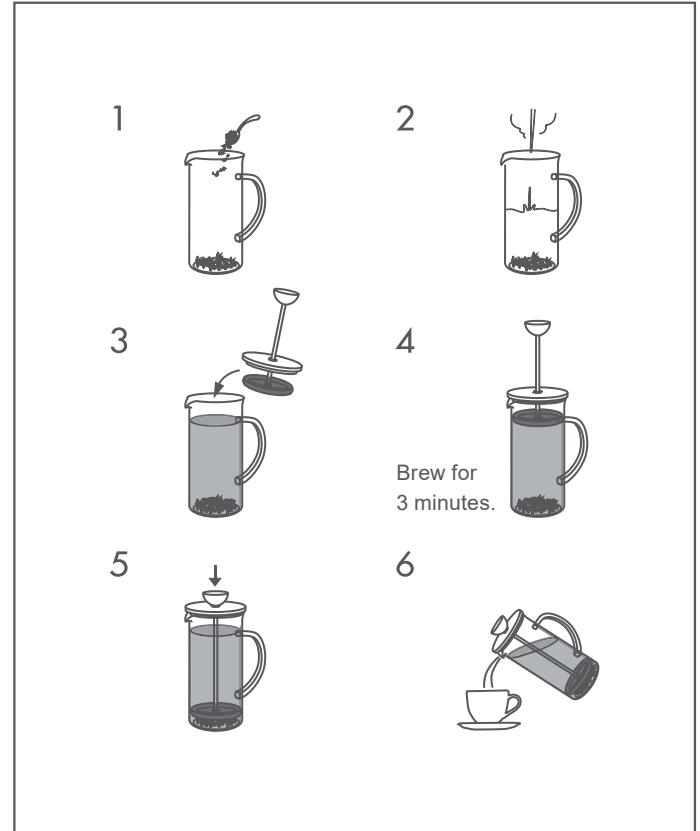
TASTE - COFFEE

Unlike with paper and cloth filters, the stainless steel filters allow coffee oils to seep into your brew, resulting in a creamier mouthfeel.

TASTE - TEA

Lowering the plunger halts the tea brewing process, making it easier to adjust the strength of your tea.

HOW TO USE





CPU-2-B
C/T24 105843
W139 / D93 / H116
Opening diameter top: 90mm
Practical capacity: 300mL



CPU-4-B
C/T24 105898
W139 / D93 / H172
Opening diameter top: 90mm
Practical capacity: 600mL



THSV-2-HSV
C/T24 105911
W136 / D92 / H128
Opening diameter top: 90mm
Practical capacity: 300mL



THSV-4-HSV
C/T12 105928
W136 / D92 / H184
Opening diameter top: 90mm
Practical capacity: 600mL



THA-2SV
C/T12 102514
W135 / D80 / H185
Opening diameter top: 73mm
Practical capacity: 300mL



THA-4SV
C/T12 104518
W155 / D95 / H205
Opening diameter top: 90mm
Practical capacity: 600mL



SYPHONS



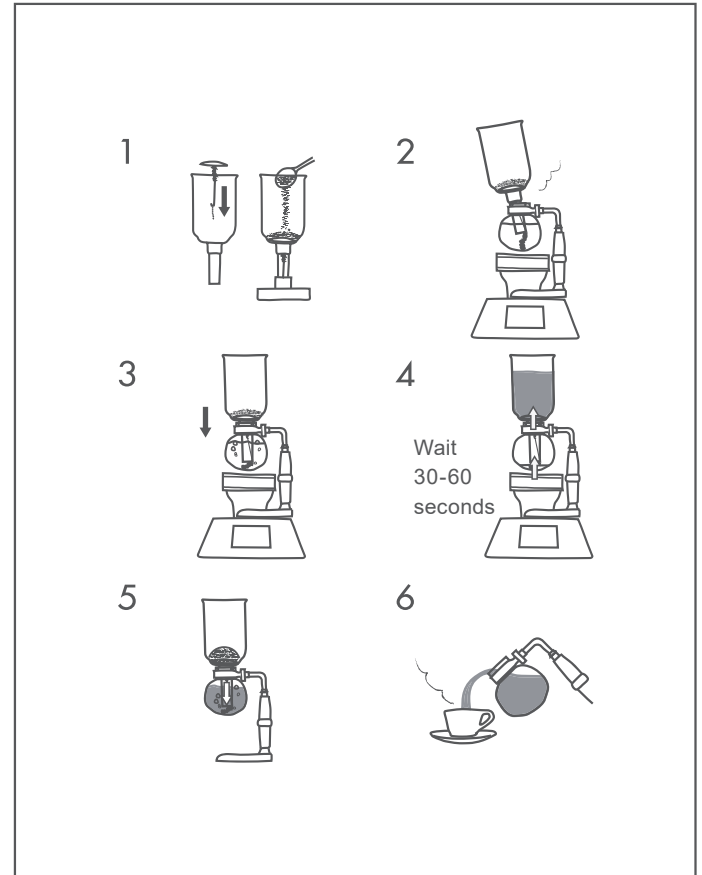
SPECIAL FEATURES

1. High temperature brewing.
2. A visually striking brewing process.

TASTE

Makes a clean coffee with no sediment, while maintaining pronounced flavours..

HOW TO USE





MCA-3
C/T10 525016
W165 / D115 / H290
Opening diameter top: 72mm (upper)
Practical capacity: 360mL
Includes a 50 sheets of paper filter



TCA-2
C/T12 503014
W160 / D95 / H340
Opening diameter top: 87mm (upper)
Practical capacity: 240mL
Includes a cloth filter



TCA-3
C/T12 503113
W160 / D95 / H350
Opening diameter top: 87mm (upper)
Practical capacity: 360mL
Includes a cloth filter



TCA-5
C/T12 503212
W160 / D110 / H360
Opening diameter top: 101mm (upper)
Practical capacity: 600mL
Includes a cloth filter



NXA-5
C/T12 502918
W115 / D180 / H390
Opening diameter top: 109mm (upper)
Practical capacity: 600mL
Includes a metal filter and a cloth filter



SCA-5
C/T4 502901
W150 / D186 / H355
Opening diameter top: 130mm (upper)
Practical capacity: 600mL
Includes a metal filter and a cloth filter



CF-103E
C/T100 915367
φ80



FS-103
C/T100 915350
φ108



COLD BREW COFFEE BOTTLES



SPECIAL FEATURES

1. Easy to use.
2. A fine mesh filter, specially designed for ground coffee.
3. Allows you to make a cold brew using only ground coffee and cold water.

TASTE

Mild flavor with a hint of bitterness. Iced coffee brewed without added ice cubes does not become as diluted and can have a richer taste.

HOW TO USE

1



2



3



4

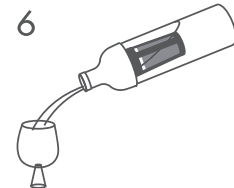


5

Brew in the refrigerator for 8 hours.



6





FIC-70-B
 C/T24 037441
 W87 / D84 / H300
 Opening diameter top:
 71mm
 Finished capacity: 650mL
 5 cups



FIC-70-PGR
 038417



KAC-70-MC
 C/T24 730199
 W90 / D90 / H320
 Opening diameter top: 85mm
 Finished capacity: 1,000mL
 8 cups



Customized color version can be ordered.



new

MCPN-7-B
 C/T24 143371
 W138 / D94 / H208
 Opening diameter top:
 88mm
 Finished capacity: 600mL
 5 cups



new

MCPN-14-B
 C/T24 143388
 W138 / D94 / H294
 Opening diameter top:
 88mm
 Finished capacity:
 1,000mL
 8 cups



CBSN-10-HSV
 C/T24 038424
 W100 / D94 / H290
 Opening diameter top:
 88mm
 Finished capacity: 1,000mL
 8 cups





new

MDCP-500-B
 C/T24 729674
 W93 / D90 / H140
 Opening diameter top:
 73mm
 Practical capacity: 500mL
 Coffee pack: 30 sheets

new

CPC-30
 C/T288 729667
 W110 / H108
 30 sheets



SCALES

SPECIAL FEATURES

1. Integrated timer makes following coffee recipes easy.
2. Sensitive to changes of 0.1g, from a min. of 2g to a max. of 2,000g.

SPECIFICATION

	VSTN-INT	VSTMN-INT
Minimum-maximum weight	2-2,000g	
Unit of display	2-200g: 0.1g / 200-500g: 0.5g / 500-2,000g: 1g	
Maximum timer count	90 minutes, 59 seconds	
Power source	DC3V 2 xAAA batteries *Batteries not included	DC4.5V 3 xAAA batteries *Batteries not included



VSTN-2000B
C/T20 021907
W120 / D190 / H29
Unit of display: 2-2000g
Maximum timer count:
99 minutes, 59 seconds



VSTMN-2000HSV
C/T20 022461
W120 / D175 / H31
Unit of display: 2-2000g
Maximum timer count:
99 minutes, 59 seconds



COLD BREW DRIP TOWERS



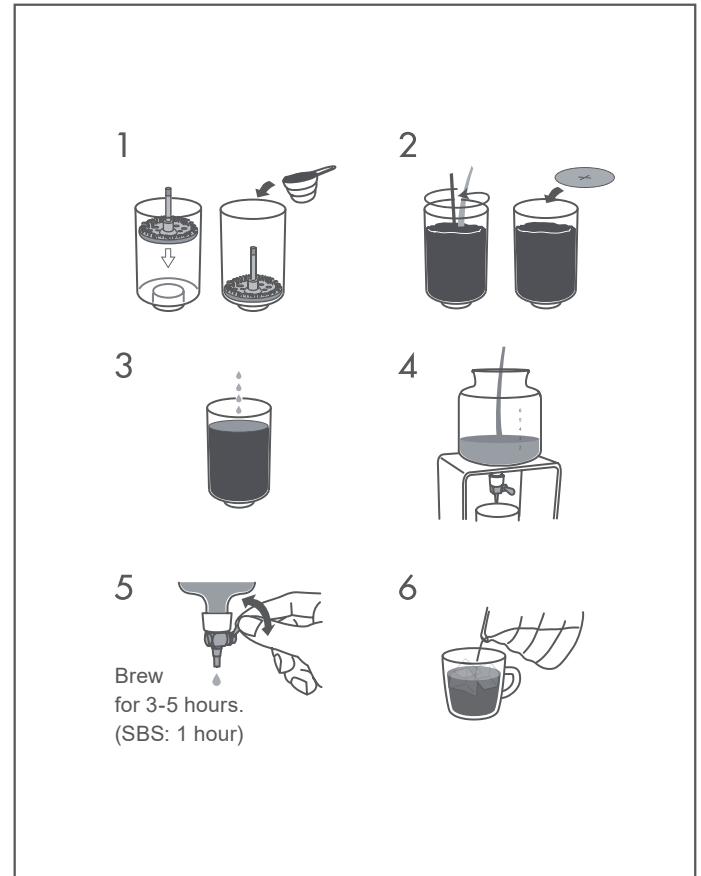
SPECIAL FEATURES

1. Visually appealing as well as functional.
2. Change the taste of your coffee by adjusting the drip rate.
3. Provides a distinct taste that is unique to slow drip cold brew.

TASTE

The slow drip method for cold brew results in a thinner cup with complex flavours and reduced bitterness.

HOW TO USE





WDD-5-PGR
 C/T12 163492
 W107 / D102 / H304
 Opening diameter top: 91mm
 Practical capacity: 600mL
 Includes 50 sheets of paper filter
 5 cups



SBS-5B
 C/T12 163263
 φ116 / H360
 Opening diameter top: 73mm
 Practical capacity: 600mL
 Includes 50 sheets of paper filter
 5 cups



WDC-6
 CT6 163201
 W150 / D129 / H455
 Opening diameter top: 77mm
 Finished capacity: 780mL
 Includes 50 sheets of paper filter
 2-6 cups



WDW-6
 C/T6 163225
 W205 / D135 / H475
 Opening diameter top: 77mm
 Finished capacity: 780mL
 2-6 cups



PTN-5BZ
 C/T6 163379
 W190 / D170 / H290
 Opening diameter top: 82mm
 Practical capacity: 600mL
 5 cups



VIC-02B
 C/T18 142138
 W180 / D120 / H220
 Opening diameter top: 116mm
 Practical capacity: 700mL
 Includes 40 sheets of VCF-02M



WDW-20
 C/T1 163232
 W290 / D230 / H980
 Opening diameter top: 105mm
 Finished capacity: 2,000mL
 Includes 50 sheets of paper filter



new
MCNR-200-B
 CT24 143074
 φ99 / H142
 Opening diameter top: 96mm
 Ground coffee 200g
 Full capacity 800mL



new
MCNR-300-B
 CT24 143081
 φ99 / H189
 Opening diameter top: 96mm
 Ground coffee 300g
 Full capacity 1,000mL



MCNJ-200-B
 CT24 413924
 φ99 / H147
 Opening diameter top: 96mm
 Ground coffee 200g
 Full capacity 800mL



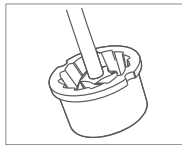
MCNJ-300-B
 CT24 413948
 φ99 / H194
 Opening diameter top: 96mm
 Ground coffee 300g
 Full capacity 1,000mL

GRINDERS



SPECIAL FEATURES

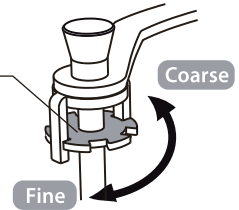
- 1.The ceramic burrs are washable and more durable.
- 2.Gives an even grind every time.
- 3.Grind size is easy to adjust.



HOW TO CHANGE THE GRIND SIZE

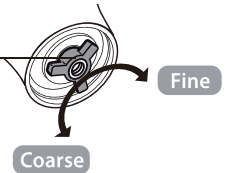
Grind-size-adjustment dial ①

Turn the dial clockwise for a fine grind, or counterclockwise for a coarse grind. Lock the grind-adjustment dial in the desired position.



Grind-size-adjustment dial ②

Rotate clockwise for a finer grind, or to counterclockwise for a coarser grind.



Equipment-appropriate grind size chart				
Particle size	Fine	Medium fine	Medium	Coarse
Equipment				
Paper filter		●	●	
Mesh/steel filter			●	
Nel drip		●	●	
Syphon		●	●	
Water drip	●	●		
Coffee maker		●	●	



MSG-2-T
C/T24 707894
W150 / D53 / H190
Opening diameter top:
46mm
Ground coffee: 24g
Washable grinder



MSG-2-TB
C/T24 707887



MSS-1DTB
C/T24 707726
W150 / D72 / H220
Opening diameter top:
70mm
Ground coffee: 24g
Washable grinder



MSCS-2DTB
C/T12 707733
W172 / D93 / H231
Opening diameter top:
90mm
Ground coffee: 100g
Washable grinder burr-
stabilizer plate



MMCS-2B
C/T12 707740
W167 / D95 / H195
Opening diameter top:
88mm
Ground coffee: 100g
Washable grinder
Die-cast aluminum handle



MOC-3-TB
C/T24 708020
W157 / D70 / H213
Opening diameter top:
63mm
Ground coffee: 36g
Washable grinder



MMSP-1-HSV
C/T24 707808
W150 / D74 / H210
Opening diameter top:
69mm
Ground coffee: 24g
Washable grinder
Die-cast aluminum handle



CMR-502C
C/T12 143067
W152 / D104 / H231
Ground coffee: 40g



MCD-2
C/T12 707337
W143 / D88 / H208
Ground coffee: 35g



CMHN-4
C/T20 707320
W208 / D105 / H215
Opening diameter top:
79mm
Ground coffee: 120g
Not heatproof glass



MCSR-1
C/T12 143111
W148 / D98 / H210
Opening diameter
top: 81mm
Ground coffee: 10g



MMR-2
C/T24 143135
W160 / D100 / H185
Opening diameter
top: 79mm
Ground coffee: 24g



MCWN-2-OV
C/T12 707436
W167 / D85 / H215
Ground coffee: 30g



OFFICIAL HP
GRINDER PAGE



HCD-2T
C/T24 514164
W111 / D90 / H138
Opening diameter top:
72mm
Practical capacity: 400mL



HCD-600T
C/T24 514157
W125 / D104 / H165
Opening diameter top:
86mm
Practical capacity: 600mL



VDD-02B
C/T12 142558
W135 / D125 / H198
Opening diameter top: 115mm
Practical capacity:
700mL(below band)
Includes 40 sheets of VCF-02W



VCND-02B-EX
C/T18 728301
W170 / D125 / H220
Practical capacity: 600mL
Includes 40 sheets of
VCF-02W



XVDD-3012W
C/T12 020290
W140 / D121 / H210
Practical capacity: 600mL
Includes 100 sheets of
VCF-02M





VHSN-60-W
C/T12 220034
W182 / D135 / H155
Opening diameter top:
73mm
Practical capacity: 600mL



VHSN-60-B
220041



VHSN-80-W
C/T12 220058
W182 / D135 / H172
Opening diameter top:
73mm
Practical capacity: 800mL



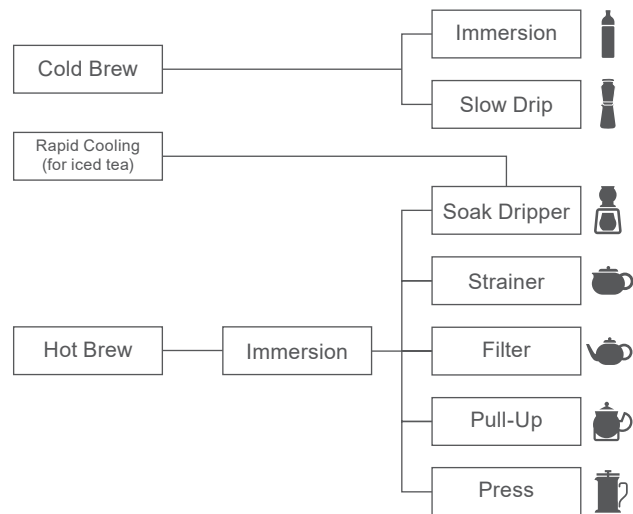
VHSN-80-B
220065

TEA



HARIO

HAND BREWING EQUIPMENT



ACCESSORIES



COLD BREW TEA BOTTLES



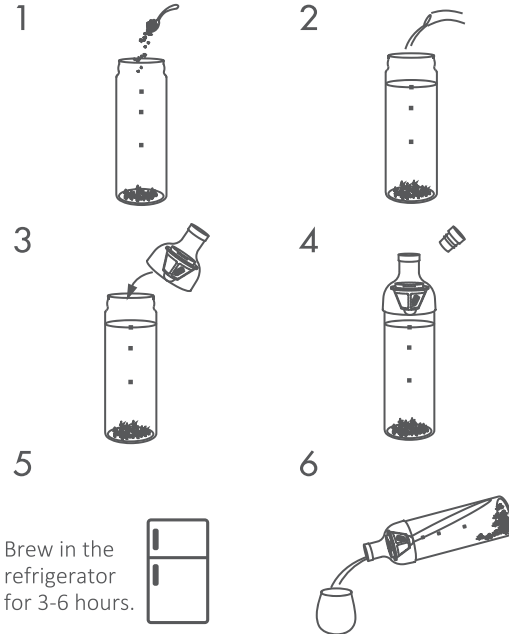
SPECIAL FEATURES

1. Features a mesh filter attached to the silicone spout.
2. Clog-resistant filter.
3. Suitable for any kind of tea.

TASTE

Cold-steeped tea is less bitter than tea brewed with hot water, so it has a gentler aftertaste.

HOW TO USE





new

FIB-30-W

C/T24 038387

W70 / D68 / H206

Opening diameter top:
57mm

Practical capacity: 300mL



new

FIB-30-SPR

038394



new

FIB-30-SG

038400



new

FIB-75-W

C/T24 038356

W87 / D84 / H300

Opening diameter top:
71mm

Practical capacity:
750mL



new

FIB-75-SPR

038363



new

FIB-75-SG

038363



**KAB-120-W**

C/T24 037571
 W90 / D90 / H320
 Opening diameter top:
 85mm
 Practical capacity:
 1,200mL
 <Tritan plastic>

**KAB-120-SPR**

037595

**KAB-120-SG**

037588

**FIBP-16-SPR**

C/T24 038288
 φ65 / H180
 Opening diameter top:
 56mm
 Practical capacity: 160mL

**FIBP-16-SG**

038271

**FIBP-40-SPR**

C/T24 037830
 φ74 / H240
 Opening diameter top:
 65mm
 Practical capacity: 400mL

**FIBP-40-SG**

037847

**new**

MD-10-SG
 C/T24 143395
 W84 / D90 / H265
 Opening diameter top:
 76mm
 Practical capacity:
 1,000mL

**new**

HCC-7-SG
 C/T24 142985
 W125 / D93 / H203
 Opening diameter top:
 88mm
 Practical capacity:
 700mL

**new**

HCC-12-SG
 C/T24 142992
 W125 / D93 / H290
 Opening diameter top:
 88mm
 Practical capacity:
 1,200mL



TEA DRIPPERS



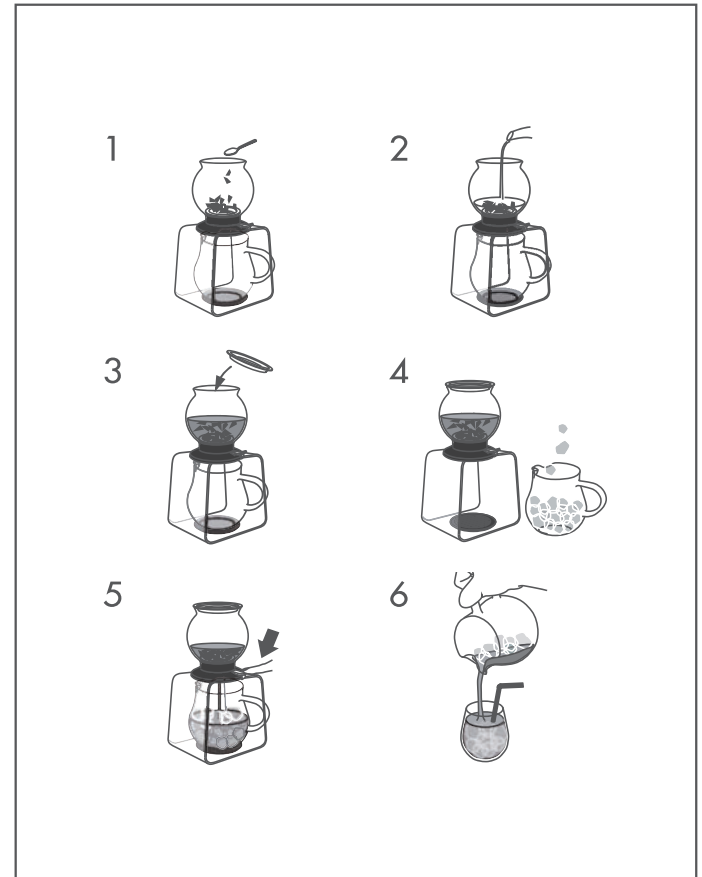
SPECIAL FEATURES

1. Brew tea with the press of a switch.
2. A gradual drip into an ice-filled server allows for faster cooling.
3. The server's spout is specially contoured to hold the ice while pouring.

TASTE

Regular teapots cause stronger tea to concentrate in the bottom, where it settles. For this reason, the traditional method of serving Japanese tea is to pour a bit into every cup, then pouring into each cup once more. The Tea Dripper pours from the bottom, allowing for an even pour with just one press of a button.

HOW TO USE



CHA CHA Dripper Bouquet



CDB-02-W
C/T24 730205
φ125 / H125
Opening diameter top: 125mm
1-4 cups



new

CDB-3012-W
C/T12 730298
φ125 / H224
1-4 cups
Practical capacity(Server): 500mL
Includes 40 sheets of VCF-02W



TDR-35B
 C/T12 022331
 W123 / D114 / H120
 Opening diameter top: 110mm
 Practical capacity: 350mL



TDR-5012B
 C/T12 022348
 W150 / D116 / H205
 Practical capacity of dripper: 350mL
 Practical capacity of pitcher: 450mL



TDR-80B
 C/T12 022300
 φ130 / H165
 Opening diameter top: 100mm
 Practical capacity: 800mL



TDR-8006T
 C/T6 022317
 W170 / D134 / H309
 Practical capacity of dripper: 800mL
 Practical capacity of pitcher: 800mL

TEAPOTS



CHJMN-30T
C/T24 093102
W143 / D98 / H98
Opening diameter top: 94mm
Practical capacity: 300mL



CHJMN-45T
C/T24 093119
W155 / D118 / H95
Opening diameter top: 94mm
Practical capacity: 450mL



CHJMN-70T
C/T24 093126
W173 / D132 / H108
Opening diameter top: 107mm
Practical capacity: 700mL



CHRN-2N
C/T24 093140
W150 / D105 / H116
Opening diameter top: 99mm
Practical capacity: 360mL



CHRN-4N
093157
W160 / D116 / H143
Opening diameter top: 99mm
Practical capacity: 700mL



QSM-1
C/T24 396920
W150 / D90 / H95
Opening diameter top: 60mm
Practical capacity: 180mL

With a heatproof glass teapot, you can enjoy the variety of colours in the tea. The teapot comes with a large tea strainer so that the tea leaves can expand easily.



CHC-45T
C/T24 091887
W150 / D116 / H132
Opening diameter top:
82mm
Practical capacity:
450mL



CHC-70T
C/T24 091894
W160 / D125 / H152
Opening diameter top:
82mm
Practical capacity:
700mL



TPC-45HSV
C/T24 093928
W140 / D105 / H123
Opening diameter top:
82mm
Practical capacity: 450mL



TPC-70HSV
C/T24 093935
W156 / D120 / H148
Opening diameter top:
82mm
Practical capacity: 700mL



new
JPP-35-W
C/T24 019508
W125 / D98 / H127
Opening diameter top: 76mm
Practical capacity: 350mL



new
JPP-35-B
019515



JP-2-SV
C/T12 410978
W195 / D120 / H125
Opening diameter top:
68mm
Practical capacity:
500mL



JP-4-SV
C/T12 410985
W225 / D137 / H130
Opening diameter top:
79mm
Practical capacity:
800mL



TEO-45-OV
C/T24 154117
W150 / D116 / H138
Opening diameter top:
82mm
Practical capacity: 450mL



TEO-70-OV
C/T24 154124
W160 / D125 / H156
Opening diameter top:
82mm
Practical capacity: 700mL



TWJ-S
C/T24 412255
φ125 / H80
Opening diameter top:
123mm
Includes a candle



TWJ-M
C/T24 412262
φ152 / H80
Opening diameter top:
152mm
Includes a candle



DRINK



new

HBG-3524
C/T24 421288
φ86 / H138
Opening diameter top:
65mm
Max. capacity: 360mL



HFG-300-C
C/T24 098435
φ84 / H170
Opening diameter top:
65mm
Max. capacity: 300mL



new

HSG-2524 (set of 2)
C/T24 421264
φ86 / H86
Opening diameter top: 86mm
Max. capacity: 260mL



HU-1
C/T5×12 836440
φ86 / H63
Opening diameter top: 86mm
Max. capacity: 170mL



SGS-80
C/T6×8 240834
φ60 / H70
Opening diameter top: 60mm
Max. capacity: 80mL



TRG-260
C/T24 220317
φ82 / H97
Opening diameter top:
82mm
Max. capacity: 260mL



TBG-380
C/T24 220300
φ74 / H167
Opening diameter top:
71mm
Max. capacity: 380mL



HPG-300
C/T6×8 429215
φ65 / H128
Opening diameter top:
65mm
Max. capacity: 300mL
Divider box specification



HPG-420
C/T6×8 429222
φ75 / H145
Opening diameter top:
75mm
Max. capacity: 420mL
Divider box specification





HAC-1
C/T6×6 440241
φ60 / H60
Opening diameter top:
60mm
Max. capacity: 100mL



SG-120
C/T24 240810
φ55 / H70
Opening diameter top:
55mm
Max. capacity: 120mL



RG-300
C/T24 240803
φ80 / H85
Opening diameter top:
80mm
Max. capacity: 300mL



HUT-8T
C/T48 429444
W111/ D87/ H95
Opening diameter top:
87mm
Max. capacity: 300mL



HGT-2T
C/T48 429420
W102/ D77/ H117
Opening diameter top:
77mm
Max. capacity: 280mL



HKM-1T
C/T48 229709
W114/ D82 / H93
Opening diameter top:
75mm
Max. capacity: 330mL



HW-8SSV
C/T24 418332
W91/ D57 / H122
Opening diameter top:
55mm
Max. capacity: 220mL



CSW-1T
C/T24 040601
W122 / D103 / H60
Opening diameter top: 103mm
Saucer: φ140
Max. capacity: 230mL



TCSN-1T
C/T24 040625
Cup: W115 / D93 / H55
Opening diameter top: 93mm
Saucer: φ140
Max. capacity: 230mL



RDM-1824
C/T24 419759
W116/ D85/ H90
Opening diameter top: 65mm
Max. capacity: 360mL



SRM-1824
C/T24 419742
W113/ D80/ H87
Opening diameter top: 80mm
Max. capacity: 300mL



new

FP-7-TW
C/T15×2 142961
W92 / D88 / H195
Opening diameter top:
80mm
Practical capacity:
700mL



new

FP-13-TW
C/T15×2 142978
W95 / D94 / H285
Opening diameter top:
80mm
Practical capacity:
1,300mL



new

FPJ-11-W
C/T24 232075
W110 / D100 / H245
Opening diameter top:
100mm
Practical capacity:
1,100mL



new

FPJ-11-SG
232099



WPC-90-W
C/T24 812475
W91 / D80 / H265
Opening diameter top:
80mm
Practical capacity:
900mL



6FP-10-W
C/T15×2 036581
W92 / D86 / H262
Opening diameter top:
82mm
Practical capacity:
1,000mL



new

RPBN-14-TW
C/T12×2 143418
W135 / D92 / H285
Opening diameter top:
81mm
Practical capacity:
1,400mL
No giftbox included



new

RPLN-14-OW
C/T24 031173
W135 / D92 / H288
Opening diameter top:
81mm
Practical capacity:
1,400mL



new

RPLN-14-CGR
036666



WPSJ-1HSV
C/T12 812468
W129 / D88 / H268
Opening diameter top:
75mm
Practical capacity:
1,000mL



WP-11B
C/T12 225039
W150 / D120 / H310
Opening diameter top:
44mm
Practical capacity:
1,100mL





IDX-2MSV
C/T12 928329
W162 / D130 / H147
Opening diameter top:
78mm
Practical capacity: 360mL



IDM-2ESV
C/T12 928206
W180 / D130 / H150
Opening diameter top:
78mm
Practical capacity: 360mL



IDS-2ESV
C/T12 928404
W180 / D130 / H165
Opening diameter top:
78mm
Practical capacity: 360mL



IDXG-8004-MSV

C/T4 528215

Drinking vessel: W162 / D130 / H147

Opening diameter top: 78mm

Practical capacity: 360mL

Glass cup: ϕ 57 / H46 Max. capacity 75mL

Practical capacity: 360mL



IDKG-1004-SV

C/T4 528222

Drinking vessel: W160 / D117 / H171

Opening diameter top: 75mm

Practical capacity: 360mL

Glass cup: ϕ 57 / H46 Max. capacity 75mL

Practical capacity: 360mL



IDKG-1004-SV

C/T4 528222

Drinking vessel: W160 / D117 / H171

Opening diameter top: 75mm

Practical capacity: 360mL

Glass cup: ϕ 57 / H46 Max. capacity 75mL

Practical capacity: 360mL



ID-4-SV

C/T6 512405

W190 / D150 / H420

Opening diameter top:

85mm

Practical capacity:

720mL



TI-300T

C/T36 836402

ϕ 70 / H164

Opening diameter top:

60mm

Practical capacity:

300mL



GT-2T

C/T30 915206

ϕ 90 / H138

Opening diameter top:

72mm

Practical capacity:

400mL



GHK-180

C/T24 220386

ϕ 89 / 102

Opening diameter top: 82mm

Practical capacity: 180mL





COOK

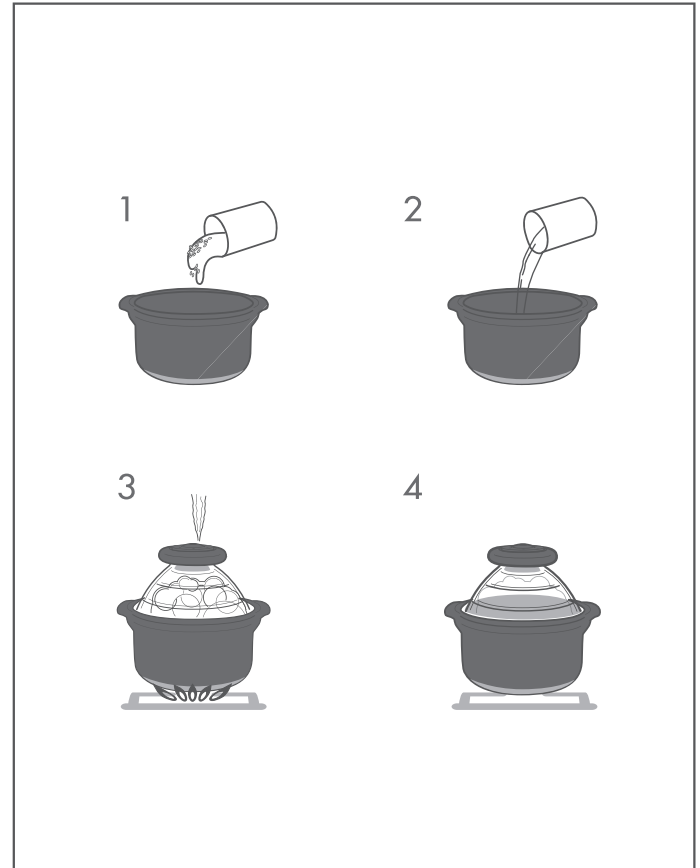
COOKING POTS



HOW TO MAKE RICE

1. Rinse the rice several times, drain the water and add the rice to the pot.
2. Add fresh water to the pot and allow the rice to soak for 30 mins.
3. Place on medium heat for 7-10 mins, until the built-in whistle starts to go off.
4. After boiling and hear whistle blowing sound (or you see bubbling inside the pot), wait for one minute, then stop the heat.
5. Remove from the heat source and allow the rice to sit for 15 mins.

HOW TO USE





For microwave oven

XRCP-1
C/T12 421059
W200 / D160 / H143
Opening diameter top: 150mm
0.5-1 cup (1 cup \approx 150g)



For direct flame

GNR-150-B
C/T6 803855
W210 / D174 / H190
Opening diameter top: 150mm
2-4 servings



For direct flame

GNR-200-B
C/T4 803862
W270 / D230 / H210
Opening diameter top: 200mm
4-6 servings



For direct flame

GIS-200
C/T6 803992
W260 / D216 / H200
Opening diameter top: 208mm
Max. capacity: 2,800mL
2-6 servings





GO-2B
C/T12 803824
W190 / D190 / H87
4 servings



For microwave oven

GIS-200
C/T6 803992
W260 / D216 / H200
Opening diameter top: 208mm
Max. capacity: 2,800mL
2-6 servings

	GAS	INDUCTION
GNR		
GIS	○	○
GDN	○	×
MIS	○	○



For direct flame

GDN-225-B
C/T6 803626
φ275 / H170
Opening diameter top: 225mm
Max. capacity: 2,000mL



For direct flame

GDN-255-B
C/T4 803633
φ310 / H185
Opening diameter top: 255mm
Max. capacity: 3,000mL



For microwave oven

XMK-120-W
C/T12 421042
φ168 / H119
Opening diameter top: 160mm
Max. capacity: 1,200mL



For direct flame

MIS-23
C/T6 803978
φ285 / H144
Opening diameter top: 225mm
Max. capacity: 1,900mL



For direct flame

MIS-26
C/T6 803985
φ315 / H156
Opening diameter top: 255mm
Max. capacity: 2,600mL



For microwave oven

XOY-1-B
C/T18 034587
W195 / D163 / H95
Opening diameter top: 163mm
Practical capacity: 450mL





HPL-80-BK
C/T16(4×4) 421103
φ220 / H35
Opening diameter top: 220mm
Max. capacity: 800mL
※ Divider box specification



HPL-110-BK
C/T16(4×4) 421127
φ250 / H35
Opening diameter top: 250mm
Max. capacity: 1,100mL
※ Divider box specification



HGZO-BK
C/T24(3×8) 421608
W213 / D120 / H45
Max. capacity: 600mL
※ Divider box specification



HOV-110-BK
C/T12 421172
W250/ D180/ H50
Max. capacity: 1,100mL



HPND-85-BK
C/T18(6×3) 421875
W240/ D94/ H67
Max. capacity: 850mL



HWCK-100-BK
C/T12 421189
φ173 / H69
Opening diameter top:
150mm
Max. capacity: 1,000mL



HTZ-40-BK
C/T36(6×6) 421639
W153 / D130 / H45
Max. capacity: 400mL
※ Divider box specification



HTZ-90-BK
C/T18(3×6) 421646
W249 / D140 / H45
Max. capacity: 900mL
※ Divider box specification



HKOZ-130-BK
C/T12 421080
W225/ D189/ H55
Max. capacity: 1,300mL



HKOZ-200-BK
C/T8 421097
W270/ D232/ H55
Max. capacity: 2,000mL



PRC-20-BK
C/T36(6×6) 421752
φ77 / H67
Opening diameter top:
77mm
Max. capacity: 200mL



new
MXPA-200-BK
C/T12(3×4) 421066
φ222 / H90
Opening diameter top:
222mm
Max. capacity: 2,000mL



new
MXPA-250-BK
C/T12(3×4) 421073
φ250 / H100
Opening diameter top:
250mm
Max. capacity: 2,500mL



MXP-900
C/T12 420335
φ156 / H102
Opening diameter top:
156mm
Max. capacity: 900mL



MXP-1500
C/T12 420342
φ187 / H115
Opening diameter top:
187mm
Max. capacity: 1,500mL



MXP-2200
C/T12 420359
φ210 / H120
Opening diameter top:
210mm
Max. capacity: 2,200mL



SWB-20-BK
C/T36(6×6) 421769
φ111 / H42
Opening diameter top:
111mm
Max. capacity: 200mL



SWB-30-BK
C/T36(6×6) 421776
φ120 / H50
Opening diameter top:
120mm
Max. capacity: 300mL



HPZ-40-BK
C/T24 421615
φ200 / H30
Opening diameter top:
164mm
Max. capacity: 400mL
※ Divider box specification



new
F-MXP-900-W
C/T48 421226
W162/ D167 / H10



new
F-MXP-1500-W
C/T48 421233
W192/ D198 / H10



new
F-MXP-2200-W
C/T48 421240
W216/ D221 / H10



MJP-250-GR
C/T12 530584
W155/ D109/ H98
Opening diameter top:
109mm
Practical capacity: 200mL



MJP-500-GR
C/T12 530591
W173/ D128/ H123
Opening diameter top:
128mm
Practical capacity: 500mL



KB-10-BK
C/T36 (6×6) 421653
W86 / D82 / H50
Opening diameter top:
82mm
Practical capacity: 100mL
※ Divider box specification



KB-20-BK
C/T36 (6×6) 421660
W113 / D105 / H60
Opening diameter top:
105mm
Practical capacity: 200mL
※ Divider box specification



KB-40-BK
C/T36 (6×6) 421677
W137 / D131 / H70
Opening diameter top:
131mm
Practical capacity: 400mL
※ Divider box specification



KB-80-BK
C/T36 (6×6) 421684
W168 / D160 / H80
Opening diameter top:
160mm
Practical capacity: 800mL
※ Divider box specification



SYTN-30-TW
C/T36(6×6) 093621
W114 / D112 / H53
Opening diameter top:
105mm
Max. capacity: 300mL
※ Divider box specification



SYTN-60-TW
C/T36(6×6) 093638
W142 / D138 / H65
Opening diameter top:
131mm
Max. capacity: 600mL
※ Divider box specification



SYTN-120-TW
C/T36(6×3×2) 093645
W170 / D168 / H78
Opening diameter top:
160mm
Max. capacity: 1,200mL
※ Divider box specification



KST-25-TW
C/T36(6×6) 093652
W111 / D107 / H47
Max. capacity: 250mL
※ Divider box specification



KST-60-TW
C/T24(6×4) 093683
W143 / D139 / H62
Max. capacity: 600mL
※ Divider box specification



KSTL-90-TW
C/T12(6×2) 421783
W238 / D125 / H56
Max. capacity: 900mL
※ Divider box specification



KSTL-140-TW
C/T12(6×2) 421790
W270 / D145 / H62
Max. capacity: 1,400mL
※ Divider box specification



DBS-120-PGR
C/T24 532441
φ55 / H135
Opening diameter top:
37mm
Practical capacity: 120mL



DBS-120B
531208



DBS-240-PGR
C/T24 532465
φ55 / H203
Opening diameter top:
37mm
Practical capacity: 240mL



DBS-240B
531215



SMG-120-PGR
C/T48 708044
φ55 / H153
Opening diameter top:
37mm
Practical capacity:
120mL
for sesame



SMS-120-B
C/T48 708037
φ55 / H153
Opening diameter top:
37mm
Practical capacity:
120mL
for salt & pepper



new
KSTM-25-TW
C/T36 421196
W108/ D108 / H47
Max. capacity: 250mL



new
KSTM-60-TW
C/T24 421202
W138/ D138 / H62
Max. capacity: 600mL



new
KSTM-120-TW
C/T16 421219
W167/ D167 / H77
Max. capacity: 1,200mL



new
HDJ-L-SPR
C/T24 401310
φ 88 / H160
Opening diameter top:
83mm
Practical capacity: 300mL



new
HDJ-L-PGR
401303





new

VSC-400-T-MZ
 C/T24 511378
 φ75 / H143
 Opening diameter top:
 70mm
 Practical capacity: 400mL



TGS-800-T
 C/T12 097896
 φ102 / H135
 Opening diameter top:
 96mm
 Max. capacity: 800mL



TGS-800-T
 C/T12 097896
 φ102 / H135
 Opening diameter top:
 96mm
 Max. capacity: 800mL



TGS-800-T
 C/T12 097896
 φ102 / H135
 Opening diameter top:
 96mm
 Max. capacity: 800mL



GTK-S-OW
 C/T12 098077
 W116 / D110 / H98
 Opening diameter top:
 105mm
 Max. capacity: 500mL



DP-600-W
 C/T24 748378
 W154 / D115 / H130
 Opening diameter top:
 105mm
 Practical capacity: 600mL



new

GXD-600
C/T12 040106
φ156 / H132
Opening diameter top:
156mm
Practical capacity: 600mL



new

GTP-500
C/T24 040137
W125 / D90 / H132
Opening diameter top:
156mm
Practical capacity: 600mL



new

GHB-1000
C/T24 040113
φ110 / H165
Opening diameter top:
73mm
Practical capacity: 1,000mL



new

GHB-2000
C/T24 040120
φ130 / H216
Opening diameter top:
73mm
Practical capacity: 2,000mL



new

GK-200-T
C/T24 040144
φ73 / H148
Practical capacity:
200mL



new

GK-200-TB
040151

Tailor-Made Products

All HARIO items can be customised to your specific needs.

CONDITIONS

MOQ: Starting at 3000 pcs

Production time: At least 5 months after all specifications have been decided upon.

(Three months for production, two months for shipping)

PROCESS

- 1: Choose the item to customise.
- 2: Select product colours and any (laser) prints.
- 3: Select box specifications. (Offset print 4C/ 2C/1C, or Flexio graphic print 2C/1C)
- 4: Specify the numbers of languages to be included in the manual.
- 5: Finalise outer box custom design (if applicable).

Original product



Customised product



FIB with custom lid colour and print.



Flexio 2C

How to read specifications



Product Number — **XGS-INT-02TB** — Colour Code
Quantity per Carton — **C/T24 020115** — JAN Code No.
Dimensions (mm) — **W145 / D121 / H120** — *The last six numbers of JAN code are mentioned. The first 7 common numbers are 4977642.
Opening diameter top: 77mm
Practical capacity: 600mL

※ The amount of Ground coffee listed indicates the recommended quantity.

Colour and material Symbols

W: White	BR: Brown	CP: Copper
OW: Off-White	CBR: Chocolate Brown	SV: Silver
TW: Transparent White	MC: Mocha	HSV: Hairline Silver
NW: Natural White	R: Red	GD: Gold
PGR: Pale Grey	SPR: Smokey Pink	OV: Olive Wood
CGR: Charcoal Grey	PC: Cherry Pink	
B: Black	OG: Olive Green	
MB: Matte Black	SG: Smokey Green	
TB: Transparent Black	DG: Dark Green	
T: Transparent	NV: Navy	
	TNV: Transparent Navy	



HARIO AUSTRALIA PTY. LTD.

Suite 2 333 Drummond Street Carlton VIC 3053 Australia

HARIO
official
website



HARIO
AUSTRALIA
website



OFFICIAL
INSTAGRAM



HARIO AUSTRALIA
INSTAGRAM



OFFICIAL
YOUTUBE

